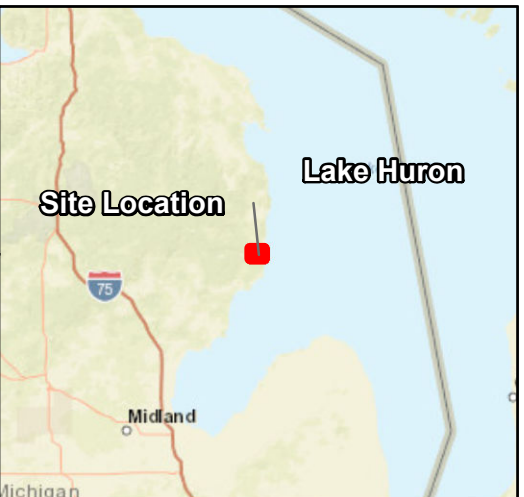
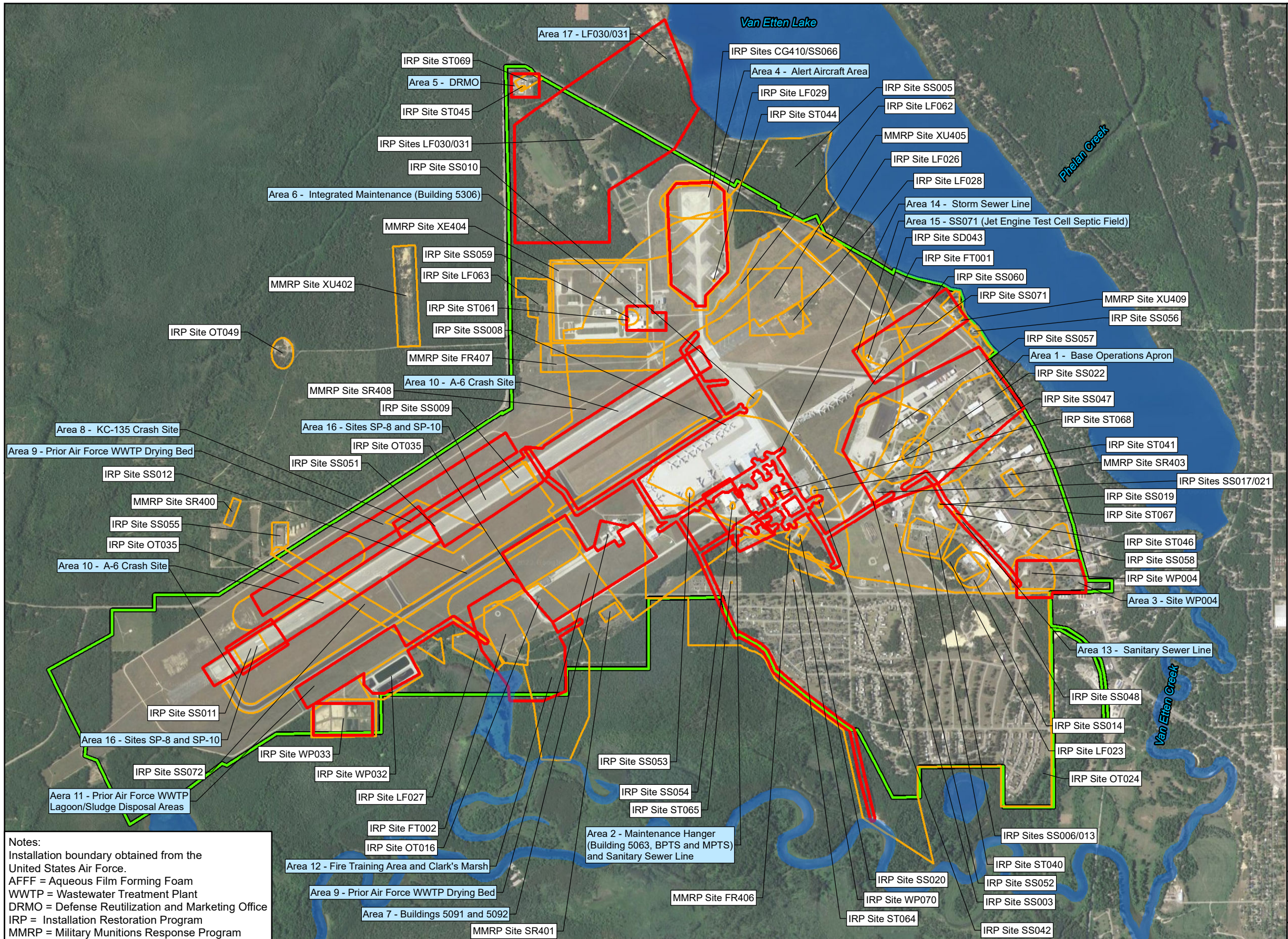


C:\Wurtsmith_RIMXD\For_Reference\Wurtsmith_IRP_Sites_AFFF_Areas_11x17.mxd



Legend

- AFFF Area
- IRP Site
- Former Installation Boundary
- Surface Water Feature

N

0 2,000 4,000
Feet

Former Wurtsmith AFB
Iosco County, Michigan

IRP Sites and AFFF Areas

Air Force Civil Engineer Center
2261 Hughes Avenue
Building 171, Ste 155
JBSA Lackland, Texas 78236

Aerostar SES LLC

Drawn: Signiski Date: 8/8/2022
Service Layer Credits: Esri ArcGIS Online Aerial Photography

Notes:
Installation boundary obtained from the United States Air Force.
AFFF = Aqueous Film Forming Foam
WWTP = Wastewater Treatment Plant
DRMO = Defense Reutilization and Marketing Office
IRP = Installation Restoration Program
MMRP = Military Munitions Response Program